

## Rochester Central Lutheran School

# RCLS PAW PRINT

January 8, 2009

**Preparing for tomorrow with a Christ-centered education today!**

RCLS is a ministry of Family of Christ, Grace, Holy Cross and Trinity Lutheran churches.

### **DON'T FORGET!**

New Scrip Hours!!

7:15-9 am / 2-3:15 pm

Order Hotel Bethlehem  
DVDs by Friday, Jan. 9

**Jump Rope for Heart col-  
lection is through Monday,  
January 22!! We extended  
the due date!!**

### **MR. PAHLKOTTER'S THOUGHTS...**

**"In the same way, let your light shine before men, that they may see your good deeds and praise your Father in heaven." Matthew 5:16**

**DID YOU TURN YOUR LIGHTS ON?** I used this question as a way to engage students after chapel this week, reminding them of our H\*E\*R\*O theme of witness and to point them to the celebration of Epiphany. January 6 is Epiphany and the celebration of when the Wise Men followed the light, the star of Bethlehem, to find "the light," a baby in the manger, Christ the Lord.

Have you ever tried to find something in the dark? One day I was in my car and the inside lights were not working for some reason and I dropped my keys. I had to feel around the floor of the car to find my keys. It was so frustrating because I heard where they fell but I could not see them...or feel them. They somehow became wedged under the seat where I was having difficulty reaching.

This is much like our world without Jesus. We are wedged in sin and we cannot find our way out as our world is so dark it is nearly impossible to see...to see the truth. Jesus is our light. He points us to the truth and gives us all that we need...forgiveness and His plan for salvation...that we no longer need to fumble or be wedged in the darkness of sin.

The light of Christ then reflects through those who believe. We become His lights as we share the love He has given us with those around us. Sometimes, however, even those who believe forget to turn on the lights and we only add to the darkness. We fall in sin and focus on the wrong things.

Take a look at yourself and ask, "Is Jesus shining through me? Am I reflecting His light in my attitudes and actions? Can others see Jesus in me?" If not, ask Christ to forgive you and to give you the strength to shine for Him. He will! He wants to shine brightly in your life and in the lives of all those around you. Let's turn our lights on for Him.

In the name of the ultimate H\*E\*R\*O, Jesus,  
Mr. Henry G. Pahlkotter, II  
Principal

**CONGRATULATIONS MS. BREWNER, THIRD GRADE TEACHER AND POST-BULLETIN TEACHER OF THE MONTH:** On Wednesday, immediately following chapel, the Post-Bulletin surprised Ms. Brewner by awarding her Teacher of the Month. They received several letters indicating why Ms. Brewner should be chosen for this honor. We congratulate Ms. Brewner and give thanks to God for her ministry here at RCLS.

### **Special points of interest:**

- *Ms Brewner—PB Teacher of the Month!*
- *Partners in Christ Re-Enrollment Meetings*
- *HERO T-shirts*
- *Community Open House*
- *Hotel Bethlehem DVDs for Sale*
- *Assuring our Faith Classes Begin*
- *Good-Bye Mrs. Haas!*
- *Welcome Miss Johnson!*
- *New Life Family Services*
- *Various educational opportunities*
- *RCLS Auction*
- *Much, much, more!*

---

**HOTEL BETHLEHEM DVD'S FOR SALE:** If you did not have a chance to order your DVD of the "Hotel Bethlehem" Christmas Celebration presented on Thursday, December 11, at the John Marshall High School Auditorium, you have another chance. Please complete the attached form and return it to the school office by Wednesday, January 14. We have several DVDs left; however, only a limited number are available. The cost per DVD is \$20

**OPEN ENROLLMENT AT RCLS BEGINS MONDAY, JANUARY 30!** If you know of a new family that would like an enrollment packet for the 2009-2010 school year, please call the school office at 289-3267 or e-mail Mrs. Finley at [mofinley@rcls.net](mailto:mofinley@rcls.net). We anticipate a great enrollment for the up-coming school year. Anyone desiring a Lutheran Christian education is invited to apply. New families may receive a \$25 credit per child toward their registration/enrollment fee by scheduling and attending an entrance appointment with the school principal. Please have them contact the school office to schedule a date.

**PARTNERS IN CHRIST RE-ENROLLMENT MEETINGS** are set for Thursday, January 29, at 12 noon or 6:30 pm. Very important information regarding the 2009-2010 school year will be shared at the meeting designed to last no longer than one hour. The noon meeting will held in the gymnasium and the 6:30 pm meeting will be held in the cafeteria.

**Parents are asked to bring their re-enrollment forms and the registration fee to the meeting as this is the enrollment date for families re-enrolling their children.** Families will receive a \$25 credit per child toward your registration fees as a thank you for attending one of the two Partners in Christ meetings. Registration for Preschool (3 or 4 year old) is \$75 per child (subtract \$25 credit for attending meeting = \$50). Registration for students Kindergarten through Grade 8 is \$125 per child (subtract \$25 credit for attending meeting = \$100). This fee is due at the time of re-enrollment at the Partners in Christ re-enrollment meetings.

Open enrollment begins the very next day on Friday, January 30. Registration rates jump to \$100 per Preschool child and \$150 per Kindergarten through Grade 8 child. Enrolling at one of the Partners in Christ Re-enrollment Meetings saves parents \$25 per child.

**ASSURING OUR FAITH** classes begin this Sunday, January 11 at RCLS to study and learn how God desires that we live. There are classes offered on various topics. You choose which one you would like to be a part of for the 5-week session. **If you cannot make all 5 sessions, that's okay! You can come to one or more of them as fits your schedule.** Classes will be held from 4-5:30 pm with a meal offered after class in the RCLS lunchroom. Contact or stop in the school office for a registration form—or, you can sign up at the door on Sunday. Come join us!!

**MRS. HAAS RETIRES:** Mrs. Phyllis Haas has taught Art at RCLS for 27 years and will be retiring at the end of the first semester. Her last day of teaching will be Thursday, January 22. This Sunday at 12 noon, a celebration luncheon is being held in her honor. We thank God for Mrs. Haas and pray that God will bless her richly in her retirement as He has blessed us through her teaching. We love you Mrs. Haas! Congratulations on your retirement!

**WELCOME MISS BROOKE JOHNSON, NEW ART TEACHER!** We welcome Miss Johnson to our RCLS faith family and to our teaching team for the remainder of the 2008-2009 school year. Mrs. Haas retires at the end of the 1<sup>st</sup> semester and Miss Johnson will fill the position starting January 27. For the next couple of weeks, she will be shadowing Mrs. Haas so that she can transition in smoothly and keep our Art program strong.

Miss Johnson grew up west of Rochester in Byron, Minnesota. She currently lives just north of Byron, near Mantorville. She is engaged to be married this August. Last May she graduated from Winona State University with her Bachelor's degree in Art Education (K-12). She enjoys learning and teaching all that she can about Art and is excited to be teaching at RCLS. She believes she will be blessed by the sense of community at RCLS and being a part of our faith family.

She is attending a Lutheran church in Byron with her fiancée and is excited to be in a Christian school setting. Please keep Miss Johnson in your prayers as she begins her ministry at RCLS.

---

---

**REGISTRATION PACKETS (RE-ENROLLMENT)** are being mailed to families this week. Please notify the office if you do not receive yours early next week! Thank you.

**PRAYING FOR OUR FAMILIES** The week of January 12, 2009 we will pray for: Rene' & Melissa Herrera (Jordan), Chad & Sara Herrick (August, Peter), Michael & Janet Hickman (Carol, Charles, Jonathan), Charles & Tanya Hodge (Faith), Sherry Hoffman (Brittney), and Fred Holmen (Corbin).

The **HERO t-shirts** arrived and were distributed with some on back order! We will have many occasions yet this school year to wear them. If you were not able to order a t-shirt earlier please complete the attached and return no later than Monday, January 12. Those choosing not to purchase one may wear school colors on the days designated HERO t-shirt days.

Another educational opportunity is being hosted at Grace Lutheran Church on Saturday, January 17. Dr. Paul L. Maier will present a seminar for the Rochester area entitled "**CHRISTIANITY & THE COMPETITION—WHO IS RIGHT**"? Dr. Maier, Professor of Ancient History at Western Michigan University, is one of our country's leading authorities on the Biblical world and a widely acclaimed author and speaker. His seminars add a fresh dimension to the Scriptures, illuminating them with important evidence from archaeology and secular history. This special event will be held at Grace Lutheran Church, 800 E Silver Lake Drive. Doors open at 9 am for coffee and rolls. The free-will offering will include lunch. You may reserve your spot by phoning the church at 289-7833 or emailing [office@gracebythelake.org](mailto:office@gracebythelake.org). The seminar concludes at 3:15 pm. Dr. Maier's books will be available for purchase and for an autograph.

**ATTENTION LADIES!** Here is your chance to connect with other women in a Bible study every Thursday from 7:45—9:30 am at Holy Cross Lutheran Church starting January 15. We will be doing **Beth Moore's newest Bible study Esther: It's Tough Being a Woman.** Going up against heavyweights bent on her destruction, Esther trusted God and landed a blow that saved her people. The Old Testament story of Esther is a profile in courage and contains many modern parallels for today's woman. Esther's destiny can be yours as you know more deeply the God who is in your corner. If you are interested in joining please contact Julie Beise at 288-7731.

**AUCTION 2009 - APRIL 18** Plans are underway for the 2009 Auction. It is time to start soliciting! Plan on attending a tutorial of the auction website on Thursday, January 15 from 6:30 pm-8 pm in the RCLS Computer Lab. Please contact Melinda Rud ([jmmhrud@msn.com](mailto:jmmhrud@msn.com)) or Debbie Witte ([mom2three@chartermi.net](mailto:mom2three@chartermi.net)) with questions.

**GRADES 1,2, AND 4** participated in the Scholastic Classrooms Care Program. Scholastic Book Club donates 100 books per classroom (up to one million) to various reading programs for participating classrooms reading 100 titles by Christmas. We're proud of our kids for participating!

**ATTENTION ALL PHOTOGRAPHERS!**

The yearbook staff is looking for some great photos. If you have taken some unique photos of an RCLS event during the 2008-2009 school year, we would love to have copies to potentially use in the RCLS yearbook. We are especially in need of candid pictures from class events and off-site RCLS events. Please send a CD of your pictures to the school office marked for the attention of the yearbook staff. If you would like the CD returned, just indicate your name on the CD. Thank you!

**Remember your leaders,  
who spoke the word of God  
to you.  
Consider the outcome of their  
way of life and imitate  
their faith.  
Hebrews 13:7**

---

**Preparing for tomorrow with a Christ-centered education today.**

---

- January 9-11 -Science Fair
- January 12 -Health Education Team, 7:50 am
- January 13 -Marketing Committee, 3 pm
- January 12-13 -Spring Play Tryouts after school
- January 14 -A& C Committee, 4:30 pm
- January 15-16 -Spring Play Tryouts after school
- January 15 -Auction Meeting/Computer Training, 6:30-8 pm
- January 14 -Grade 3 to sing at Chapel
- January 16 -Parent Transport, afternoon only!
- Jan 16-18 -Faribault BB Tournament
- January 19 -No School/Martin Luther King Day
- January 20 -Community Open House, 6:30-8 pm
- January 21 -Grade 5 to sing at Chapel
- January 22 -End of 2nd Quarter, 39 days
- January 23 -No School/Teachers Work Day
- January 26 -Board of Directors, 6:15 pm
- January 28 -Kindergarten to sing at Chapel
- January 29 -Partners in Christ Re-enrollment Meeting for Parents, noon or 6:30 pm
- Report Cards sent home
- January 30 -Family Dance Night, 6:30-7:30 pm
- Open Enrollment Begins
- January 31 -Winona Mustang Classic (BB)
- February 4 -Gr. 4 to sing at Chapel
- February 5 -Gr. 4 to the Samaritan Nursing Home, 9:50-11 am
- Feb. 6-7 -Conference BB Tournament
- February 11 -Concert Choir to sing at Chapel
- Feb. 9-13 -Spirit Week
- February 12 -Coffee & Tour, 7:45 am
- February 13 -Parent Transport—PM only
- I Love My School Parties
- Feb. 13-15 -RCLS BB Tournament
- February 16 -No School, Presidents' Day
- SAC Open
- February 18 -Gr. 1 to sing at Chapel
- February 22 -Kindergarten 100s Museum
- February 23 -Board of Directors, 6:15 pm
- February 25 -Ash Wednesday
- Gr. 2 to sing at Chapel
- February 27 -Mid Quarter

\*\*View the RCLS calendar at [www.rcls.net](http://www.rcls.net) and click on view calendar.



## NEW LIFE FAMILY SERVICES

January Chapel Project

Sponsored by grades 2 and 3

During the month of January you will discover a crib standing outside the school office. We are trying to fill it with items needed by new babies and their mothers along with other things necessary to the work of New Life Family Services. The needed supplies are listed on the attached flyer and on the hallway bulletin board outside the faculty lounge and workroom.

Mrs. Kris Lindquist is wanting old or new costume jewelry in order to make a **“JEWELRY CHRISTMAS TREE”** for the RCLS auction. If you haven't seen one before stop by the school office and see the one she made for us! Jewelry that is broken or missing pieces are also welcomed. You may drop off your items at the school office or call Kris Lindquist 281-3081 to make arrangements for drop off.

### GATEway Science Fair – February 28

Scientific effort + creative ability + project presentation = science fair project! All students in grades 2-6 are invited to participate in the annual GATEway Science Fair! It is scheduled for Saturday, February 28, 2009, from 12:30 to 4:30 p.m. at the Mayo Clinic Gonda Building. During the Science Fair, entrants will present their projects to reviewers and enjoy a fun family presentation by the Science Museum of Minnesota. The public is invited to view the projects at 4:00 p.m. The event closes with the distribution of reviewer comments and participation certificates at 4:30 p.m. The GATEway Science Fair is hosted by the Mayo Foundation Chapter of Sigma Xi.

Registration will be through the Winter Community Education brochures, registration flyers sent to the schools, or online at [www.rochesterce.org/youth](http://www.rochesterce.org/youth). Entry fee is \$8.00 and includes a t-shirt and a snack. Financial assistance is available. Registration deadline is February 4th. Late registrations will be accepted with the same fee, but may not receive a t-shirt. See rules and a printable mail-in registration form at [www.geocities.com/gateroch](http://www.geocities.com/gateroch). Contact Diane Hanson (507-281-1498 or [dianembh@yahoo.com](mailto:dianembh@yahoo.com)) with questions.



**RCLS COMMUNITY OPEN HOUSE** is scheduled for Tuesday, January 20, 6:30– 8 pm. Anyone interested in learning more about our school Preschool through Grade 8 is invited to attend. If you would like us to send an enrollment packet prior to the open house to a friend, please contact the school office. Attached is a flyer that can be posted. Please consider placing one at your home church or perhaps your work place. Let's blanket Rochester and the surrounding area about this opportunity! Thank you for your help!

### **REMEMBER IN YOUR PRAYERS...**

#### **Grieving:**

...Mrs. Amy Gary (Jason, Alix, Ethan) upon the recent death of her father.

...Mr. Nate Johnson (Mikaela) upon the recent death of his mother.

...Mrs. Janet Brauckman (Brian, Christopher) upon the recent death of her mother. Brauckmans are a former RCLS family.

...Mr. Derek Dammen (Amy, Nikolas) upon the recent death of his father.

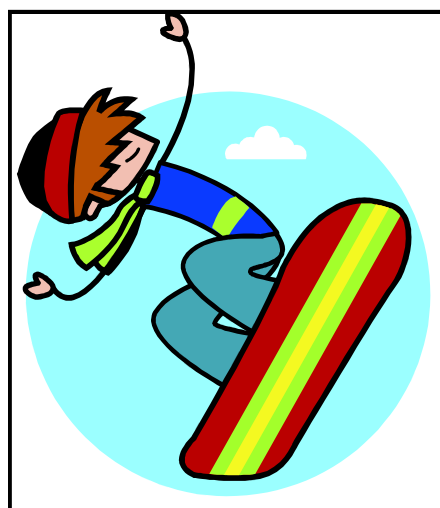
#### **Hospitalized & Health Concerns:**

...Ashley Ackman (Makaela in Preschool)

...Mrs. Sue Hanson (Steve, Caleb, Lucas) - a former RCLS family.

...Mrs. Felicia Boisen (Jeff, Jenna, Melanie)

RCLS is participating in a **CELL PHONE FUND-RAISER**. There is nothing for you to buy or sell to participate. We simply ask that you donate your extra cell phones to our drive. Most households have 5-6 unused cell phones just sitting in drawers. Please put these phones to good use. They will raise needed funds and 100% of the proceeds will go directly to RCLS. The phones collected will be utilized for 911 purposes in the United States, redeployed nationwide, and used in developing countries to improve quality of life through better communication. Just send the cell phones with their batteries to the school office. No chargers or accessories are needed. Please help make our drive a success. Ask friends, family members, neighbors, and co-workers to donate their used cell phones. Every phone helps!



## **TRY OUT FOR THE RCLS SPRING MUSICAL!**

### **SCHOOL HOUSE ROCK LIVE!**

\*The play is March 13, 14, and 15, 2009.

\*If you would like to participate in a singing or acting role, sign up for a try-out time in the office.

\*Try-outs are January 12, 13, 15, and 16.

\*Grades K-8 may try-out to participate.

\*Please see Miss Schauer if you have questions!